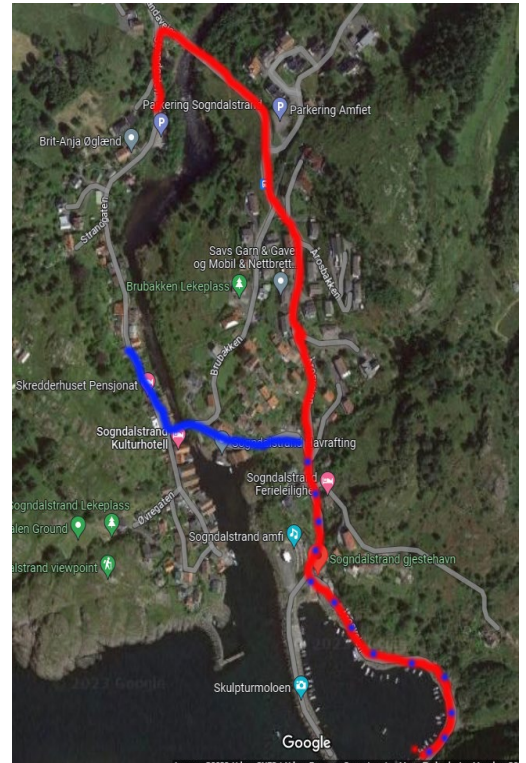


The Boat

The boat is parked at the pier 200 meter from the house.
The place is marked with number 59

You can drive the red line or walk the blue line to the boat.



To access the boat, remove all ropes from the pole and pull the boat to you as the rope in the water is **slowly** released, do not drop all rope you need it to get the boat back out again when you are done for the day.

Note how the boat has the ropes when you start and replicate when you use the boat. It might be windy so its important that the boat is in the correct place.

The boat can not sink and it empty's itself so that also means that from time to time there is water on the floor. Never put the life vests on the floor, they react to water!

There are two “keys” for the boat, one is the main power switch that is located at the rear of the boat open the middle “table” and turn the power on. ALWAYS remove it after use of the boat.



The next “key” is for the ignition and has a safety pin that has to be put in place to activate the ignition.

When this is done you lower the motor with the down button on the power throttle. Lower it until it stops, you can easily hear it.

Then you check the fuel under the seat, fill when it is half full so you don’t run out of fuel. Note how much fuel you use on the first trip you can easily stay out for a day on full tank.

Petrol is normal petrol 95, there is **no** oil mix on this motor.

Pleas use the NAVIDA map app to navigate, there are underwater reef and watch the Fish Finder for the depths The boat sticks less than 1 meter deep, so you are fine most places.



Download App

[NaVida – Apper på Google Play](#)

[NaVida on the App Store \(apple.com\)](#)

Maps for PC: [Norgeskart](#)

Quickguide:

To start

- 1) Power on key behind the table
- 2) Key in ignition and safety on
- 3) Lower the motor.
- 4) Check fuel under seat, check that the valve is open
- 5) Fish finder in place and turn on.
- 6) Navida app on to show the maps
- 7) Life vest on.
- 8) Start motor.
- 9) Release all ropes, they float

When done

- 1) Pick up the white buoy and secure one side.
- 2) Turn of motor so you don't get caught in the lines
- 3) Turn the motor up so its not in the water
- 4) Remove BOTH keys
- 5) Check the fuel, if you need to refill close the valve so you don't spill in the car.
- 6) Remove the Fish Finder
- 7) Bring all the life vests out of the boat they react to water.

Emergency numbers

Terje : +47 920 38 513

Fire and emergency: 110

Coast guard: +47 91 50 30 03

It is a nice trip to Rekefjord and Jøssingfjorden. Remember it is a small boat and the sea makes waves.



We have had good fishing luck on the blue path, be aware of the reefs, marked red

